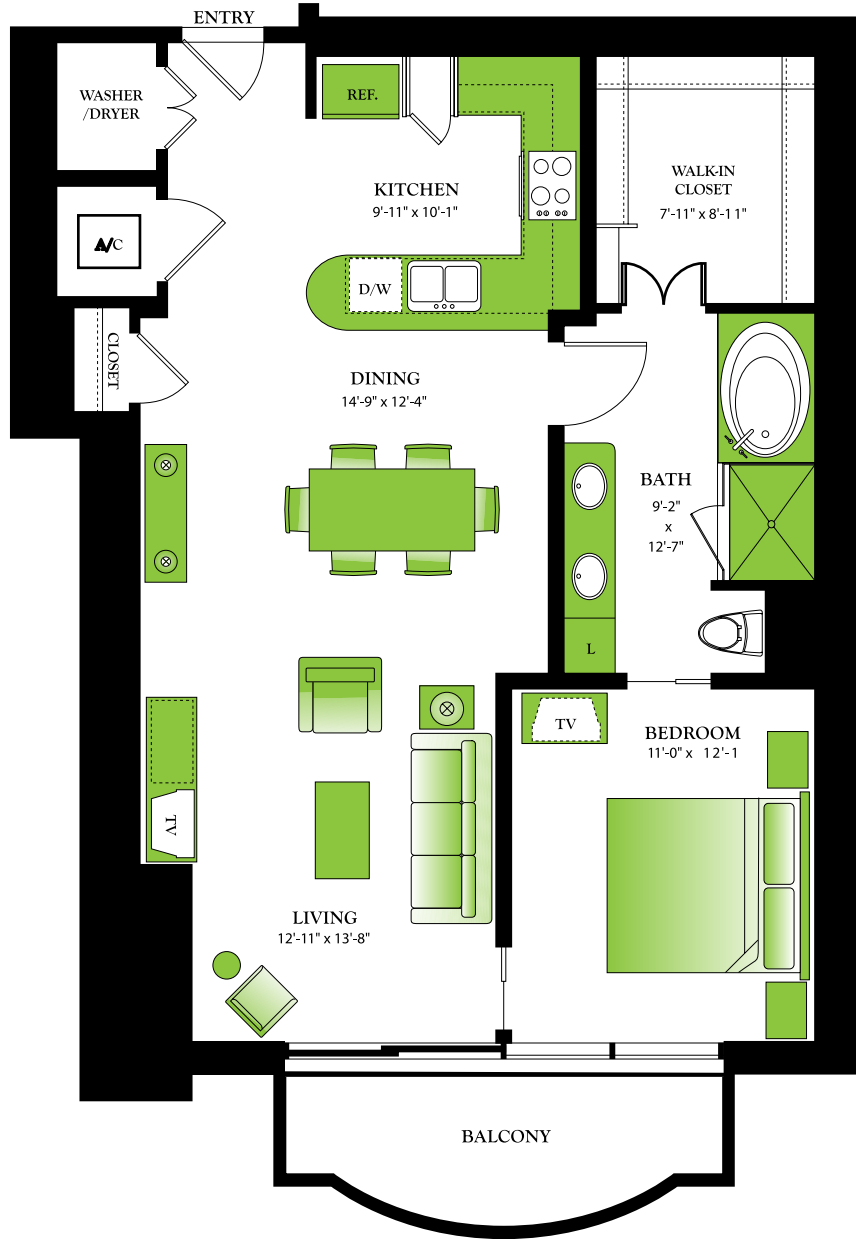


# ASPEN

976 Sq. Ft. | 92 Sq. Ft. Balcony



## FEATURES & FINISHES

- ◆ Gourmet kitchens with granite & stainless steel appliances
- ◆ Designer bathrooms with custom granite
- ◆ Dramatic 10-12 ft. ceilings
- ◆ Panoramic views of citywide skyline & overlooking Discovery Green Park
- ◆ Private balconies for every residence
- ◆ Custom-finished 2-1/4" solid oak hardwood floors
- ◆ Expansive walk-in closets

## CONVENIENCES

- ◆ Valet & concierge services
- ◆ Walk to underground tunnel system
- ◆ Walk to Minute Maid Park & the Toyota Center
- ◆ 4 blocks from METRORail Station to Medical Center & Reliant Stadium

## AMENITIES

- ◆ Two-tiered resort-style swimming pool with a cascading waterfall
- ◆ Private cabanas
- ◆ Cozy fire pit
- ◆ Grand, lounging terrace overlooking Discovery Green Park
- ◆ Grilling stations and dining areas
- ◆ Quarter mile walking track
- ◆ Private dining and conference area
- ◆ Resident room with tables for dining & gaming
- ◆ Media room for movie viewing & cocktail parties
- ◆ State-of-the-art fitness facility overlooking the pool
- ◆ Morning room with juice & coffee bar
- ◆ WiFi accessible in all common areas

FLOOR

RENT \*

DATE

AGENT

\*Prices subject to change without notice.

1400 McKinney Street  
Houston, Texas 77010  
(713) 868-5933

OneParkPlaceHouston.com